

SCALE 2:1

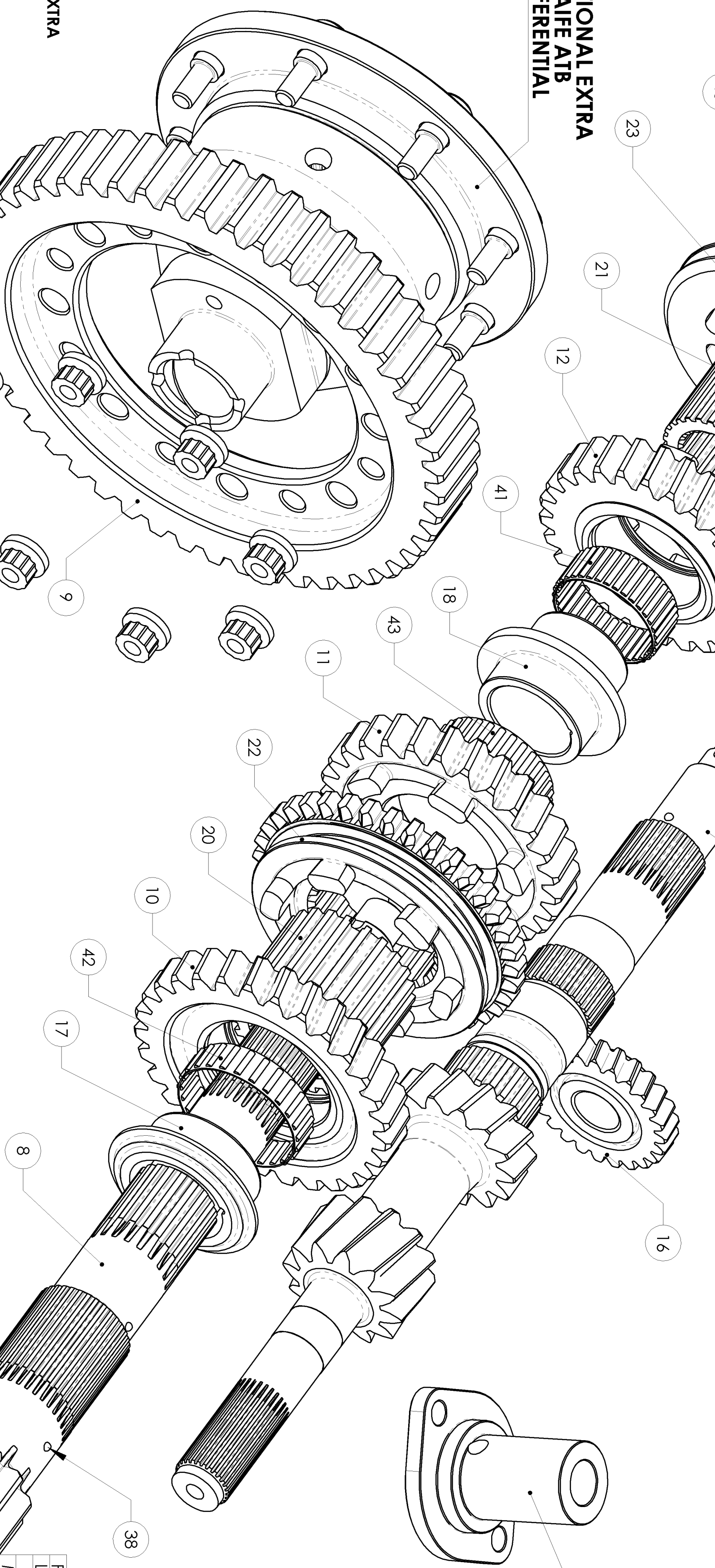
SCALE 2:1

ITEM NO.	PART NUMBER	DESCRIPTION	QTY.
1	E-2V1-02	INPUT SHAFT INC. 1ST & 2ND GEARS	1
2	E-2V1-03	3RD GEAR I/P SHAFT R1.500:1	1
3	E-2V1-04	4TH GEAR I/P SHAFT R1.200:1	1
4	E-2V1-05	5TH GEAR I/P SHAFT R0.956:1	1
5	E-2V1-06	6TH GEAR I/P SHAFT R0.800:1	1
6	E-2V1-07	SPLINED SLEEVE 5TH/6TH GEARS	1
7	E-2V1-08	DRIVE DISC 5TH/6TH GEARS	1
8	E-2V2-09	OUTPUT SHAFT R4.636:1	1
9	E-2V1-10	CROWN WHEEL R4.636:1	1
10	E-2V1-11	1ST GEAR O/P SHAFT R2.417:1	1
11	E-2V1-12	2ND GEAR O/P SHAFT R1.929:1	1
12	E-2V1-13	3RD GEAR O/P SHAFT R1.500:1	1
13	E-2V1-14	4TH GEAR O/P SHAFT R1.200:1	1
14	E-2V2-15	5TH GEAR O/P SHAFT R0.956:1	1
15	E-2V2-16	6TH GEAR O/P SHAFT R0.800:1	1
16	E-2V1-17	REV IDLER HELICAL R2.250:1	1
17	E-2V1-18	INNER TRACK 1ST GEAR	1
18	E-2V1-19	INNER TRACK 2ND/3RD GEARS	1
19	E-2V1-20	SPACER 5TH/6TH O/P	1
20	E-2V1-21	SPLINED SLEEVE 1ST/2ND GEARS	1
21	E-2V1-22	SPLINED SLEEVE 3RD/4TH GEARS	1
22	E-2V1-23	DRIVE DISC - 1ST/2ND & REV GEAR O/P	1
23	E-2V1-24	DRIVE DISC 3RD/4TH GEARS	1
24	E-2V1-25	BEARING CONVERSION SLEEVE	1
25	E-2V1-26	SELECTOR PIVOT EXTENSION 5TH/6TH	2
26	E-2V1-27	SCREW MODIFICATION DRAWING	1
27	E-2V1-28	SPACER - OPERATING BLOCK	1
28	E-2V1-29	VW CASING & PARTS MODIFICATION DRAWING	1
29	E-1V1-03	END COVER - MA CHINED	1
30	E-1V1-10	INNER TRACK 5TH GEAR I/P	1
31	E-1V1-11	INNER TRACK 6TH GEAR I/P	1
32	E-1V1-22	CASING SCREW	3
33	E-1V1-32	CASING SCREW	2
34	E-1V1-33	GEAR CHANGE SHAFT SUPPORT (15mm)	1
35	E-1V1-34	GEAR CHANGE SHAFT SUPPORT (16mm)	1
36	E-10C2-14	LOCKNUT - M22x1.5 L.H	1
37	E-14C1-28	LOCKNUT - INPUT SHAFT	1
38	225	BALL BEARING \varnothing 1/8	3
39	98	BEARING - ROLLER 17x40x12	2
40	580	BEARING - ROLLER 35x40x13	1
41	439	BEARING - ROLLER 38x43x17	1
42	661	BEARING - ROLLER 45x50x13	1
43	202	BEARING - ROLLER 42x47x13	1
44	245	BEARING - ROLLER 35x40x17	2
45	758	NUT - NYLOC M6	1
46	458	SOCKET HEAD CSK SCREW M6x1.0x20 LG	1
47	478	SOCKET HEAD CAPSCREW M8x1.25x45 LG	2
48	F-8R4-01	ASSEMBLY	1

**OPTIONAL EXTRA
QUAIFE ATB
DIFFERENTIAL**

ITEM NO.	PART NUMBER	DESCRIPTION	QTY.
49	E-1V1-24	SELECTOR OPERATING BLADE 5TH/6TH GEARS	1
50	E-1V1-25	OPERATING ARM 5TH/6TH	1
51	E-1V1-28	OPERATING TANG 5TH/6TH	1
52	659	SOCKET HEAD CSK SCREW M6x1.0x12 LG	2
53	595	SELLOCK PIN \varnothing 3x12 LG	2
54	442	SOCKET HEAD CAPSCREW M6x1.0x15 LG	1
55	775	SOCKET HEAD CAPSCREW M8x1.25x16 LG	1
56	879	WASHER - SCHNORR TYPE M6	1
57	880	WASHER - SCHNORR TYPE M8	1

34 \varnothing 15mm ROD
OR
35 \varnothing 16mm ROD



FINISH: MACH.
LIMITS: FRACT. \pm 1/64"
DEC. \pm 0.005"
MATERIAL: GRIND@G
TREATMENT:
DATE: 9.12.03
DRAWN BY: J.M.
CHECKED BY: J.M.
SPEED DOGGED

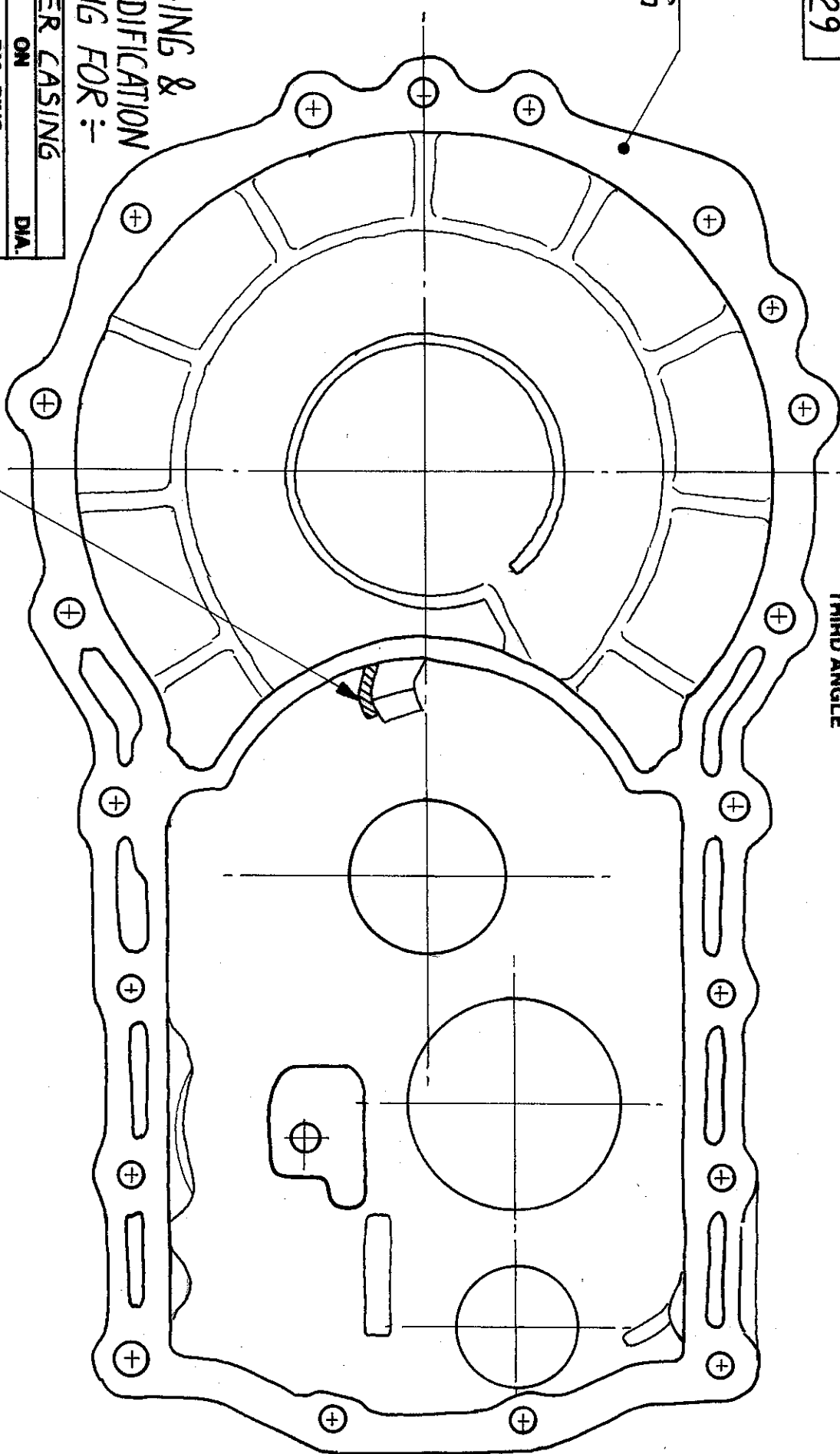
TITLE ASSEMBLY SHEET 1 OF 1
SCALE 1:1 U.O.S.
DRG. No. E-2V1-01

ALTERNATIVE CROWN WHEEL & PINION RATIO'S AVAILABLE

E-2V1-29

THIRD ANGLE

OUTER CASING



V.W. CASING & PART MODIFICATION DRAWING FOR :-

TITLE: OUTER CASING

NO. OF T. ON DIA.

DIM. OVER DIA. PINS.

P. P.A.

FULL INVOLUTE FORM.

NO. OF T. ON DIA.

DIM. OVER DIA. PINS.

P. P.A.

SHEET 1 OF 4

REMOVE THE PROTRUDING OIL SCOOP AT THE LOWER END OF THE CASING (SHADED AREA) TO CLEAR 4TH GEAR ON THE OUTPUT SHAFT.

FINISH. MACH. AS SHOWN GRIND AT 9° LIMITS. FRACT. ± 1/64"

DEC. ± 0.005"

MATERIAL V.W. PART

TREATMENT:

ISSUE 3 DATE 30/08/21/98

DRAWN BY JP CHECKED BY

Part/Drg. No. E-2V1-29

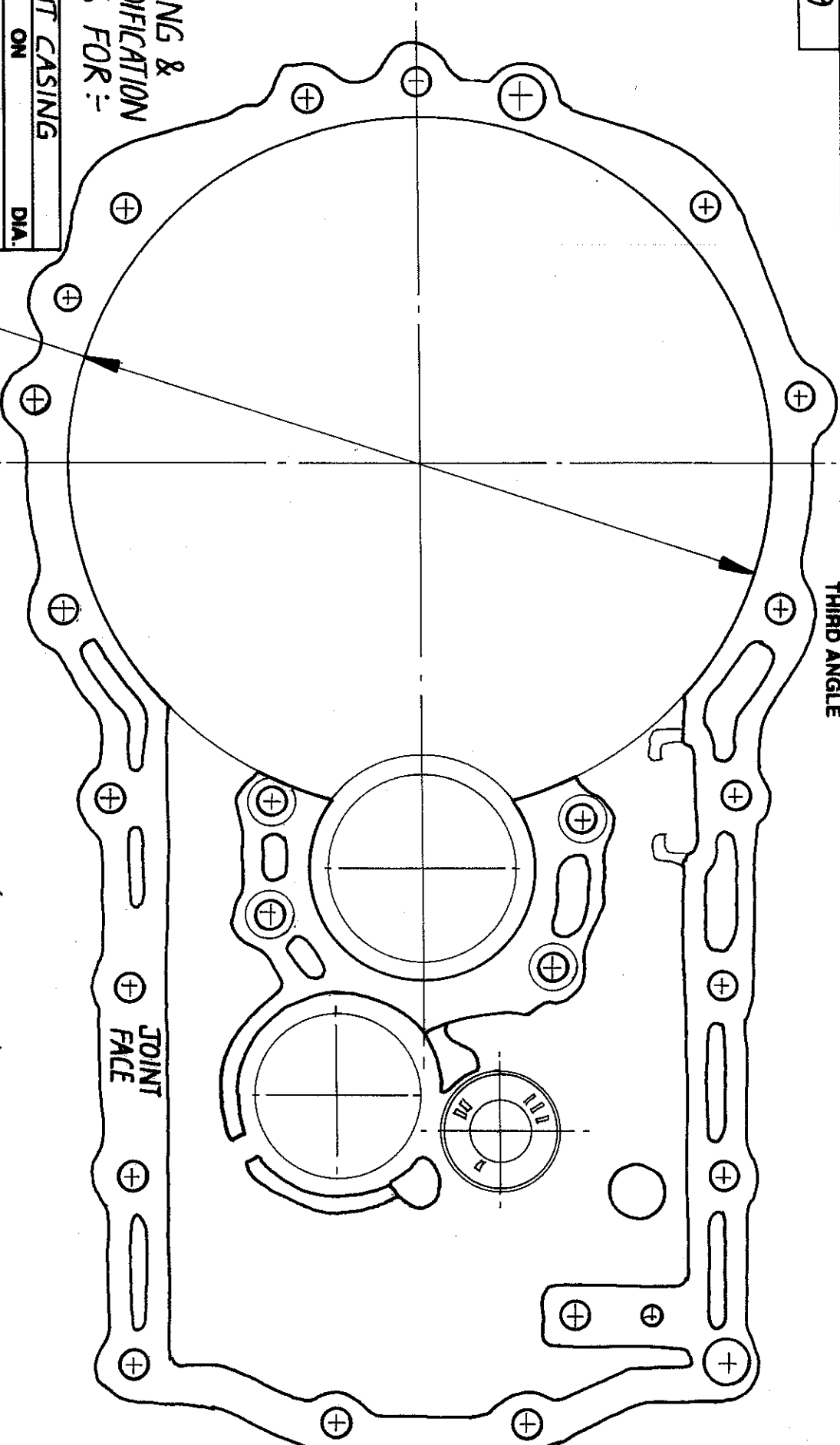
QUAIFE DESIGN & DEVELOPMENT.

USED IN. V.W. GOLF OZA/O2J 6 SPEED DOGGED BOX.

E-2V1-29

THIRD ANGLE

V.W. CASING &
PART MODIFICATION
DRAWING FOR :-



TITLE FRONT CASING

NO. OF T. ON DIA.

DIAM. OVER DIA. PINS.

P. P.A.

FULL INVOLUTE FORM.

NO. OF T. ON DIA.

DIAM. OVER DIA. PINS.

P. P.A.

SHEET 2 OF 4

Part/Drg. No. E-2V1-29

QUAIFE DESIGN & DEVELOPMENT.

USED IN. V.W. GOLF 02A/02J
6 SPEED DOGGED BOX

M/C DIFF. AREA TO ϕ 8.030" (203.96mm)
PARALLEL SIDED ON ϕ 8.000" (203.20mm)
TO A DEPTH OF 1.535" (39.0mm) FROM JOINT FACE
TO CLEAR THE CROWN/WHEEL IF USING A
FINAL DRIVE RATIO OF 4.636:1 or 5.091:1

FINISH MACH. AS SHOWN GRIND AT 9°
LIMITS. FRACT. $\pm 1/64$ "

DEC. ± 0.005 "

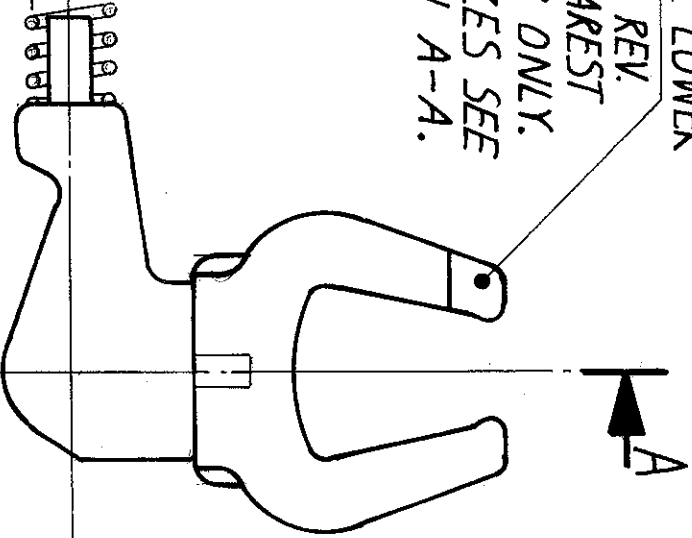
MATERIAL V.W. PART

TREATMENT.

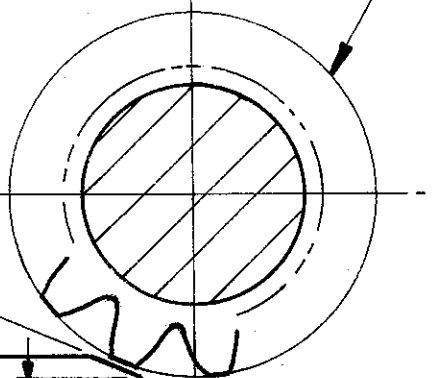
ISSUE 3 DATE 30/08/24/11/98

DRAWN BY. JP. CHECKED BY.

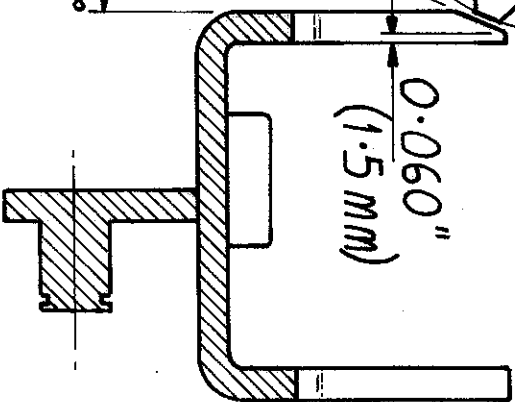
CHAMFER LOWER
ARM OF REV.
FORK NEAREST
TO GEAR ONLY.
FOR SIZES SEE
SECTION A-A.



1ST GEAR
INPUT
SHAFT



20°-25°



SECTION A A

M/C TO SIZES SHOWN ABOVE

V.W. CASING &
PART MODIFICATION DRG. FOR

TITLE: REVERSE IDLER FORK.

NO. OF T. ON DIA.

DIM. OVER DIA. PINS.

P. P.A.

FULL INVOLUTE FORM.

NO. OF T. ON DIA.

DIM. OVER DIA. PINS.

P. P.A.

SHEET 3 OF 4

Part/Drwg. No. E-2V1-29

QUAIFE DESIGN & DEVELOPMENT.

USED IN. V.W. GOLF 02A/02J
6 SPEED DOGGED BOX.

FINISH MACH. AS SHOWN/GRIND AT 9°

LIMITS. FRACT. ± 1/64"

DEC. ± 0.005"

MATERIAL V.W. PART

TREATMENT:

ISSUE: 3 DATE: 30/1/98 24/1/98

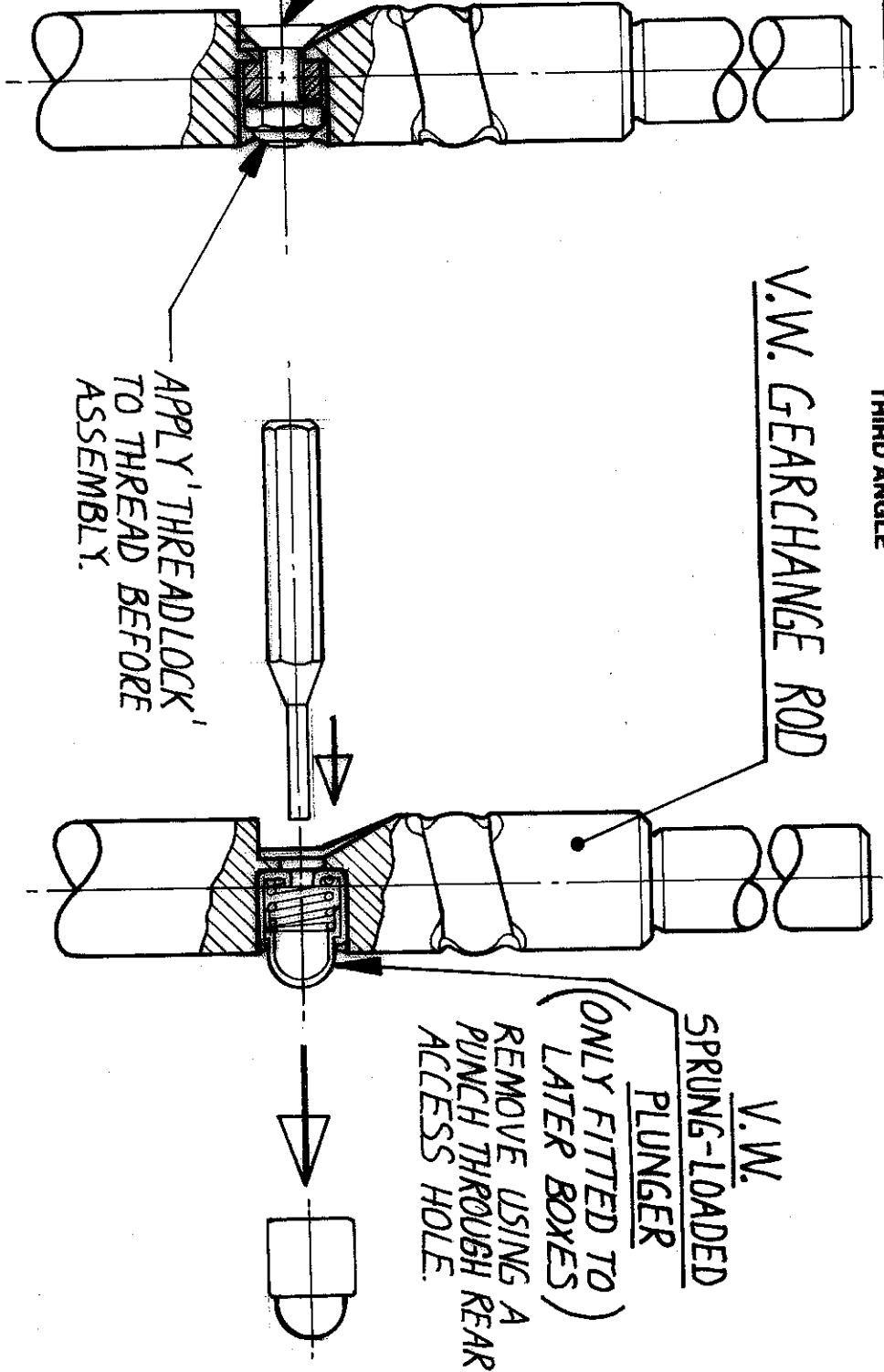
DRAWN BY: J.P. CHECKED BY:

E-2V1-29

THIRD ANGLE

REPLACE V.W. SPRUNG
LOADED PLUNGER WITH
QUAIFE SUPPLIED SPACER,
COUNTER SINK SCREW &
NYLOC NUT.

NOTE - HOLD NUT
WITH LONG-
NOSE PLIERS OR
SCREWDRIVER TO PREVENT
NUT FROM TURNING WHILE
TIGHTENING SCREW FROM
REAR.



V.W. CASING & PART
MODIFICATION DRG. FOR :-
TITLE GEARCHANGE ROD.

NO. OF T.	ON	DIA.
DIM. OVER	DIA. PMS.	
P.	P.A.	
FULL INVOLUTE FORM.		
NO. OF T.	ON	DIA.
DIM. OVER	DIA. PMS.	
P.	P.A.	

MODIFY PART AS ABOVE

V.W.
SPRUNG-LOADED
PLUNGER
(ONLY FITTED TO
LATER BOXES)
REMOVE USING A
PUNCH THROUGH REAR
ACCESS HOLE.

SHEET 4 OF 4
Part/Drg. No. E-2V1-29

QUAIFE DESIGN & DEVELOPMENT. USED IN. V.W. GOLF 02A/02J
6 SPEED DOGGED BOX

FINISH. MACH. AS SHOWN GRIND AT 9°
LIMITS. FRACT. ± 1/64".
DEC. ± 0.005"
MATERIAL V.W. & QUAIFE PARTS
TREATMENT.
ISSUE. 3 DATE. 30/1/98
DRAWN BY. JP CHECKED BY.